

INTERNATIONAL PRODUCTS CATALOG

Explore our catalog



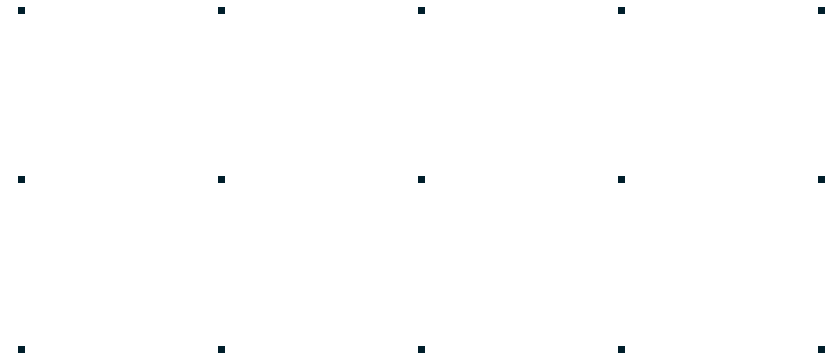
Over five years of excellence in global commodity trading, we specialize in high-level origination and strategic distribution across Asia, the Americas, and beyond.



Who we are

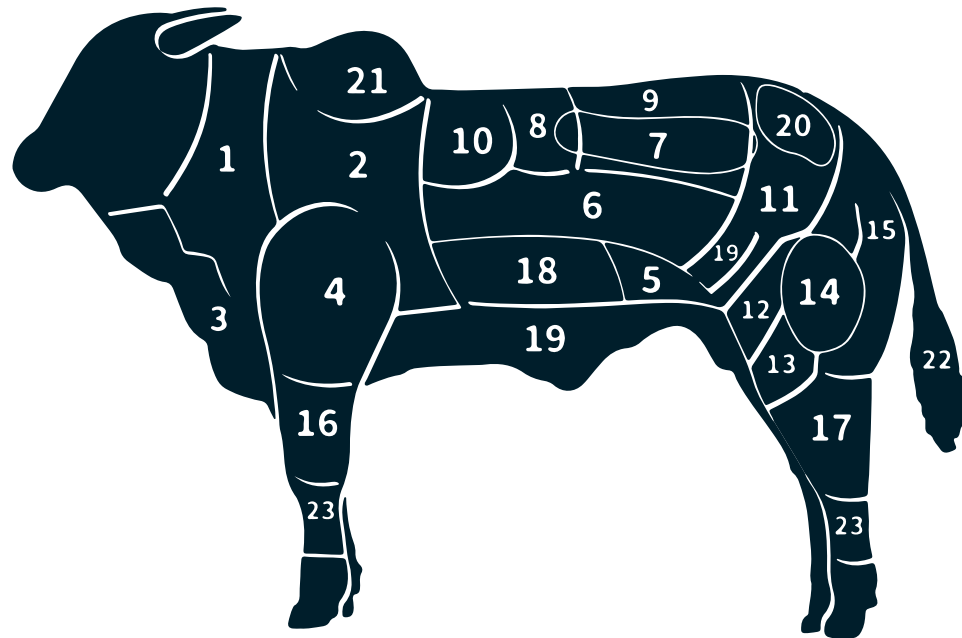
We are a trading company based in Florida with an international network of industries around the world to satisfy the needs for our customers. Our traders have more than 30 years of experience in the Meat & Commodities market as well as animal protein commerce (beef, pork, poultry, lamb), and other commodities within more than 50 countries.

www.zfccommodities.com



cut maps

- 01 • Neck / Pescoço / Cogote
- 02 • Chuck / Acém / Aguja Completa
- 03 • Brisket / Peito / Pecho
- 04 • Shoulder / Paleta / Paleta
- 05 • Thin Skirt / Fraldinha / Entraña Fina
- 06 • Flank / Ponta de Agulha / Flanco
- 07 • Tenderloin / Filé Mignon / Solomillo
- 08 • Rib Eye / Filé de Costela / Bife Ancho
- 09 • Striploin / Contrafilé / Bife Angosto
- 10 • Cap of Cube Roll / Capa de Filé / Tapa de Bife Ancho
- 11 • Rump / Alcatra / Cuadril
- 12 • Knuckle / Patinho / Bola de Lomo
- 13 • Flat / Coxão Duro / Cuadrada
- 14 • Topside / Coxão Mole / Nalga de Adentro
- 15 • Eye Round / Lagarto / Peceto
- 16 • Shin / Músculo Dianteiro / Garrón Delantero
- 17 • Shank / Músculo Traseiro / Garrón Trasero
- 18 • Ribs / Costela / Costilla
- 19 • Rump Tail / Maminha / Colita de Cuadril
- 20 • Rump Cap / Picanha / Tapa de Cuadril
- 21 • Hump / Cupim / Jaroba
- 22 • Tail / Rabo / Rabo
- 23 • Beef Feet / Mocotó / Pata de Vacuno





Head quarter cut

Trasero

This document and the portfolio contained herein are for private use only and property of the group. Unauthorized reproduction or distribution is strictly prohibited.

Tenderloin // Solomillo



Tenderloin chain on

Solomillo con Cordón



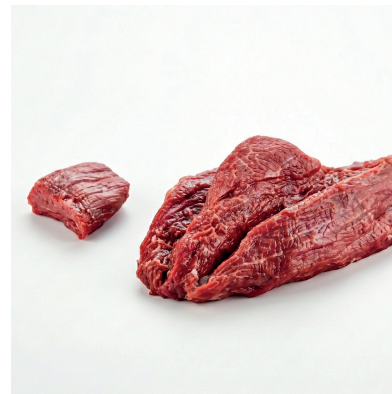
Head of Tenderloin

Corazón de Solomillo



Tenderloin chain off

Solomillo sin Cordón



Tenderloin Head

Tapa de Solomillo



Striploin // Bife Angosto



Striploin Chain On
Bife Angosto Bajo con Cordón



Striploin Chain On Family Pack
Bife Angosto con Cordón Partido



Striploin Chain Off
Bife Angosto sin Cordón



Striploin Chain On and Belly Chain Off
Bife Angosto Bajo con Cordón y sin Falda



Striploin // Bife Angosto



Striploin Scan Trim 5 Ribs

Bife Angosto Bajo sin
Cordón, sin Falda y
sin Grasa, con 5 Costillas



Striploin Heart

Corazón de Bife
Angosto



Cube Roll // Bife Ancho



Cube Roll

Bife Ancho sin Tapa
y sin Grasa



Cube Roll Fat On

Bife Ancho sin
Tapa y con Grasa



Rib Eye // Bife Ancho



Rib Eye Lip On Fat Off
Bife Ancho con Tapa y sin Grasa



Rib Eye Fat On
Bife Ancho con Tapa y con Grasa



Rump // Cuadril



Full Rump
Cuadril con Tapilla y Rabillo



D-Rump
Cuadril con Tapa



Rump // Cuadril



Rump Heart Fat On Cork On

Corazón de Cuadril
con Grasa y con Tapilla



Rum Cap

Tapa de Cuadril



Rump Heart A And B

Corazón de Cuadril
Parte A y Parte B



Pad Rump Heart

Corazón de Cuadril/
Cadera sin Tapilla
y sin Grasa



Rump // Cuadril



Rump Tail Fat On

Colita de Cuadril



Pad Rump Tail

Colita de Cuadril sin
Grasa



Topside // Nalga de adentro



Topside

Nalga de Adentro
con Tapa



Topside Cap Off

Nalga de Adentro
sin Tapa



Rump // Cuadril



Topside Cap Off Baby Top Off

Nalga de Adentro
sin Tapa y sin Baby Top



Topside Cap On And Fat Off

Nalga de Adentro con
Tapa y sin Grasa



Baby Top

Baby Top



Silverside // Cuadrada con peceto



Flat // Cuadrada



Flat // Cuadrada



Pad Flat With Side Muscle

Cuadrada con
Mariposa



Square Pad Flat

Nalga de Afuera
Cuadrada



Pad Flat

Cuadrada Roja



Butterfly Flat

Mariposa



Eye Round // Peceto



Eye Round Fat On Skin On

Peceto con Grasa
y con Piel



Pad Eye Round

Peceto Rojo



Eye Round Fat Off And Skin On

Peceto sin Grasa y
con Piel



Knuckle // Bola de lomo



Muscle // Muslo



Muscle // Muslo



**Heel Muscle
Without
Golden Coin**

Palomita



**Golden Coin
Muscle**

Bananita



Shank

Garrón Trasero





Portion control

Porción

This document and the portfolio contained herein are for private use only and property of the group. Unauthorized reproduction or distribution is strictly prohibited.

Portion Control // Porción



**T-bone
Steak**
Bone en Filetes



Rib Fingers
Costilla



Carpaccio
Carpaccio



**Striploin
Steak Ready**
Bife Angosto en
Filetes



Portion Control // Porción



Heart Striploin Steak Ready (Red Meat)

Bife Angosto en
Filetes sin Grasa
(Carne Roja)



Rump Heart Fat Off Cork Off Steak Ready

Filetes de Corazón de
Cuadril sin Grasa y sin
Tapilla



Cube Roll Lip On Steak Ready

Filetes de Ancho
con Grasa



Rump Heart A And B Steak Ready

Corazón de Cuadril
Parte A y Parte B en Filetes



Portion Control // Porción



Topside Cap Off Steak Ready

Filetes de Nalga sin Tapa



Baby Top Steak Ready (Red Meat)

Filetes de Baby Top (Carne Roja)



Minced Meat

Carne Picada



Knuckle Steak Ready

Bola de Lomo en Filetes



Portion Control // Porción



Knuckle Heart Steak Ready

Corazón de Bola de
Lomo en Filetes



Flakes

Lámina



Stick

Palito



Shank in Cube

Garrón en Cubo



A large, stylized number '4' graphic in a light teal color, positioned on the left side of the page. It has a modern, geometric design with rounded corners and a thick outline.

Fore quarter

Delantero

This document and the portfolio contained herein are for private use only and property of the group. Unauthorized reproduction or distribution is strictly prohibited.

Forequarter // Delantero



Brisket
Pecho



Brisket 97VL
Pecho 97VL



**Brisket
(Red Meat)**
Pecho (Carne Roja)



**Pastrami
Brisket**
Pecho Pastrami



Forequarter // Delantero



Chuck
Aguja



**Chuck Roll
Side B**
Corazón de Aguja Parte B
/Huachalomo



**Chuck Roll
Side A**
Corazón de Aguja
Parte A/Sobre Costilla



**Chuck Eye
Roll**
Corazón de Aguja



Forequarter // Delantero



Neck Fat On
Cagote con Grasa



Neck Fat Off
Cagote sin Grasa



Hump
Joroba



Forequarter // Delantero



Shoulder
Paleta



**Shoulder
Cover**
Tapa de Paleta



**Shoulder
Clod**
Carnaza de Paleta



**Shoulder
Heart**
Centro de Carnaza
de Paleta



Forequarter // Delantero



Chuck Tender
Chingolo



Oyster Blade
Marucha



Shin
Garrón Delantero



Rib Coast
Sobrecostilla





Flank

Flanco

This document and the portfolio contained herein are for private use only and property of the group. Unauthorized reproduction or distribution is strictly prohibited.

Flank // Flanco



**Brisket
Navel End**
Punta del Pecho



Ribs
Costilla



Flank Steak
Bife de Vacío



**Divided
Flank**
Flanco Partido





Offals

Menudencias

This document and the portfolio contained herein are for private use only and property of the group. Unauthorized reproduction or distribution is strictly prohibited.

Offals // Menudencias



**Meat Around
Sticking
Wound**

Carne de Sangrado



Head Meat

Carne de Cabeza



**Cheek Or
Jowl Nuts**

Masetero



Thick Skirt

Entraña Gruesa

Offals // Menudencias



Thin Skirt
Entraña Fina



Liver
Hígado



Tail
Rabo



Heart
Corazón

Offals // Menudencias



Tripe With Honeycomb
Mondongo con Bonete



Tripe Without Honeycomb
Mondongo sin Bonete



Tripe Bleached
Mondongo Blanqueado



Honeycomb
Bonete

Offals // Menudencias



**Weasand
Meat**
Esófago



Aorta
Aorta



Bible
Librillo



Lips
Labios

Offals // Menudencias



Trimmings
Recorte de Troceo



Tendon
Tendón



Pizzle
Verga



Paddy Wack
Ligamento Cervical

Offals // Menudencias



Spinal Cord
Médula Espinal



Diaphragm Membrane
Membrana del Diafragma



Sweetbread
Molleja



Bovine Trachea
Tráquea

Offals // Menudencias



Gulit
Gola



Brain
Seso



**Nose
Cartilage**
Cartílago de Nariz



Kidney
Riñones

Offals // Menudencias



Lungs
Pulmones



Tongue
Lengua



Spleen
Bazo



Meat
solutions
for **global**
markets.

ZFC[®] global commodities

This document and the portfolio contained herein are for private use only and property of the group. Unauthorized reproduction or distribution is strictly prohibited.



ZFC®